

PROJECT PROFILE: CLAPHAM JUNCTION DEPOT

PROJECT SPECIFICATIONS

| | |
|--------------------------|--|
| Status: | COMPLETED |
| Started: | OCTOBER 2022 |
| Completed: | JUNE 2023 |
| Project Duration: | 9 MONTHS |
| Client: | FIRST GROUP |
| Location: | CLAPHAM JUNCTION DEPOT |
| SVR Disciplines: | NEW DRIVERS WALKWAY DESIGN & REFLECTIVE ACOUSTIC FENCE INSTALLATION |



ABOUT THE PROJECT

Sunville Rail as Principal Contractor and Traction Rail were awarded the contract to complete significant works to make existing walking routes safe for depot staff and drivers.

PROJECT OVERVIEW

The work scope began with the survey and development of designs to enable on site works. Client engagement and review of the process was carried out in an open manner to encourage collaboration and solutions to site limitations.

Sunville Rail and Traction Rail then completed the following works:

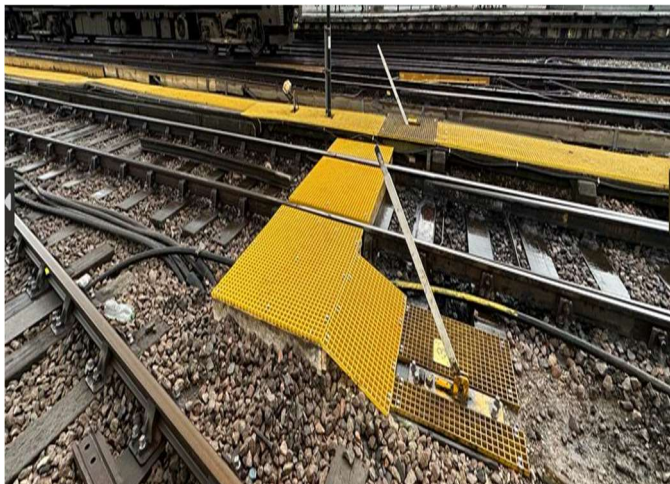
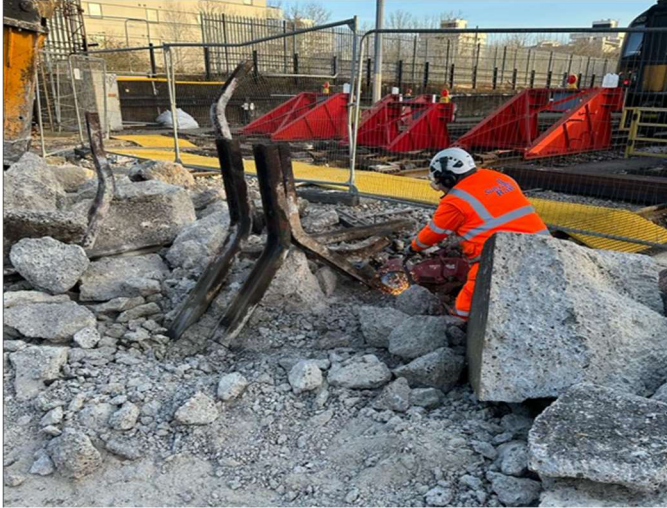
- All surveys, design, planning and co-ordination of access for the works.
- Various walkways including timber frame crossings, grano dust walkways and concrete walkways where appropriate including handrails and line marking.
- Existing Track Cross over removal and new walkway installation.
- Full depot ETE and E&P review for both third rail requirements and walkway lighting provision.
- Integration of all ETE and lighting works on existing depot assets.
- Carry out duties as principal contractor managing site safety and supplying welfare facilities.
- Removal of spoil and construction materials from site and environmentally disposed of.



PROJECT PROFILE: CLAPHAM JUNCTION DEPOT



PROJECT PROFILE: CLAPHAM JUNCTION DEPOT



For more information please contact:

Paul Hayes
Managing Director
Sunville Rail Limited
paul.hayes@sunvillerrail.co.uk

